

# Energy Partners



New-Mac Electric Cooperative

Your Touchstone Energy® Partner



## Do your kids know to be safe around power lines?

A quick guide for parents on how to keep your kids safe.

### Why should you care about electrical safety?

**BECAUSE SHE  
DEPENDS ON YOU  
TO KNOW.**



New-Mac Electric's website, [newmac.com](http://newmac.com), is a wonderful tool for parents to teach their kids to be safe around electricity. Inside the "Safety Portal" is the "Kids Corner" with all kinds of activities for kids.

As spring comes into full swing, your backyard becomes the perfect playground for your children, grandchildren or other little ones in your life. It's great because kids need to get outdoors and enjoy the fresh air. You've probably heard multiple messages about making sure kids get enough exercise each day.

We understand that time outside is important for your child's health and well-being. So, it's critical to make sure they have a safe space to play. While scrapes and bruises can be a part of the outdoor experience, electrical hazards shouldn't be. Looking up for power lines is one way

to look out for your kids.

If you see any potential problems with power lines or other electrical equipment on your property, please call New-Mac. We want to help keep you and your family safe!

#### Climbing trees near power lines

Climbing trees is a timeless activity for kids. However, when a tree is too close to a power

See  
*Safety*,  
page 3

Kids Safety	page 1
Lineman Appreciation Day	page 2
Restoration Process	page 4

### Kite Safety Tips

- Keep kites away from electric lines
- Use wood, paper, plastic when building a kite
- Never use metal on kites and only a dry cotton string
- Never fly a kite during stormy weather
- Never try to climb electric poles to retrieve a kite



April is the official National Kite Month. New-Mac hopes that kids learn to fly those kites high but being safe while doing so.



New-Mac Electric Cooperative

Your Touchstone Energy® Partner

Energy Partners is a monthly publication of New-Mac Electric for the purpose of informing members of the programs, services and happenings of and related to the cooperative.





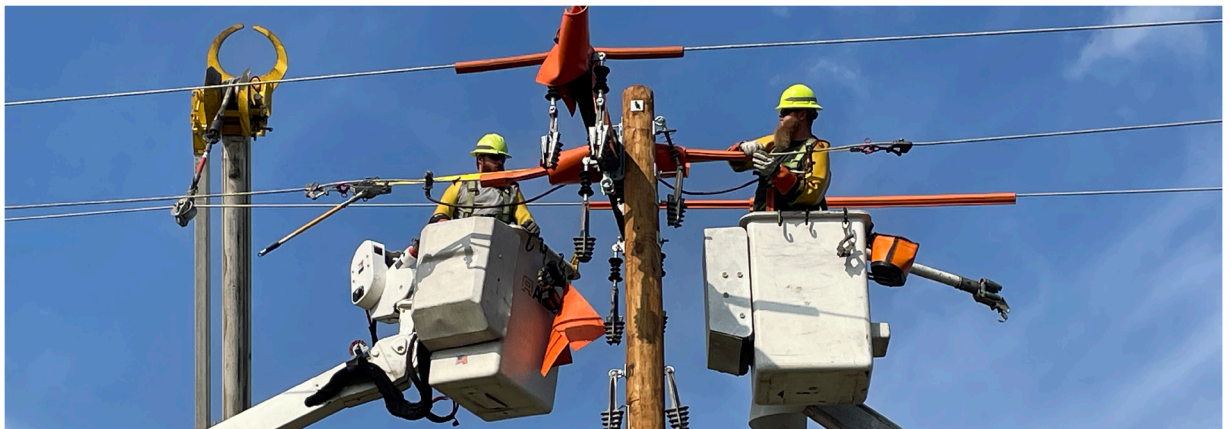
# Doing what it takes to keep the lights on

Throughout the years, lineworkers across the country have put the good of the community first, leaving their families to enter dangerous situations and extreme elements: rain, sleet, ice, extreme cold and scorching heat. They are on call 24 hours a day, seven days a week, ready to set aside personal priorities, holidays, vacations and birthdays.

They do all of this to ensure we have power flowing to comfortable, safe homes. New-Mac Electric is extremely proud of all of our lineworkers, past and present, who have built and maintained many miles of power lines in our service territory to fulfill their commitment to keeping the lights on for our membership. April 8th has been designated "Lineworker Appreciation Day" by the Association of Missouri Electric Cooperatives.

So, New-Mac, along with other electric cooperatives across the state, ask you to help us honor

the brave men and women at the heart of our co-op who work hard to keep the lights on.



## Seniors! No time to waste!

New-Mac Electric Cooperative is now accepting applications for our 2024 College Scholarship Program.

This marks the ninth consecutive year in which New-Mac will be awarding one scholarship to a high school senior in each of the 10 school districts.

In order to be eligible to receive one of the scholarships, a student must be enrolled in one of the following high schools: Carthage, Diamond, East Newton, Joplin, McDonald County, Neosho, Pierce City, Sarcoux, Seneca or Wheaton. The applicant's parent or guardian must be a member of New-Mac Electric Cooperative, and the applicant must have a cumulative minimum 3.0 GPA. Immediate family members of New-Mac employees/board members are ineligible.

Each scholarship will be in the amount of \$500 and will be non-renewable. The scholarship must be used at an accredited

college or university, and the winner must become a full-time college student, beginning in the fall of 2024.

For complete guidelines and an application, visit [newmac.com](http://newmac.com), see your school guidance counselor or call our Member Services Department at 417-451-1515 or 800-322-3849.

**The application deadline is Friday, April 12, 2023.**





## ○ Safety

*Continued from page 1*

line, it can be a safety threat for anyone near the tree, not just our brave little climbers.

Here are a few tips to keep yourself and your climbing kids safe around trees at home:

- Check trees around your property to see if they are too close to a power line. Trees and tree branches should be at least 15 feet away from a power line.

- Set boundaries on which trees can and can't be climbed. If you see a tree that is too close to a power line or unsafe to climb, use a visual indicator, like a strip of paint, and tell your child why they can't climb that tree.

- Call us if a tree is too close to a power line. We are always happy to help remove hazards. Never try to clear branches or remove a tree near a power line yourself.

### Kites

As the spring wind picks up, it's a fantastic opportunity for your kids to let their kites take flight. However, kites and power lines don't mix. To prevent flying straight for disaster, make sure you always:

- Fly in an open space away from power lines. Feel free to fly if your property has plenty of open space. If not, look to fly at a park or another public area.

- Make sure to fly your kite on days with good weather. Stormy weather, especially lightning, can pose a threat to kite flyers. Strong winds can quickly pull a kite out of a safe flying range and into electrical equipment.

- Never try to retrieve kites caught in electrical equipment. If your child's kite comes in contact with a power line or other electrical equipment, call us for safe retrieval.

### RC planes and drones

Taking to the skies with an RC plane or drone can be an awesome experience, but kids need to understand how to be safe with flying tech. Here are a few tips

you can follow to stay safe around power lines:

- Make sure your child is comfortable and capable of flying their RC plane or drone. They need to understand the boundaries and rules that come with flying toys.

- Find an open space for your child to fly. Like flying a kite, it's best to find an open field or park free of power lines or other electrical equipment.

If you would like more information on how to keep your kids safe around powerlines (both underground and over head), reach out to your Member Service Department. They will provide you with lots of resources that will inform you on the dangers.

Additionally, on the New-Mac Electric website under the "Safety Portal" tab you will find the "Kids Corner". Here New-Mac provides activities for kids including safety videos, activities and coloring pages.



New-Mac uses power town to demonstrate the dangers of electricity (above). Below, we encourage kids to get out and play but always look up before climbing. (At left) Your co-op attends many school functions to teach safety.



We try to educate all members of our community to watch for power lines and to be safe around them, it doesn't matter the age.

If you have any questions or would like more information on how to be safe around electricity please call member services at 417-451-1515.



## Restoration process

Storm season is quickly approaching. Here at New-Mac Electric, we strive to keep our members educated and up-to-date when it comes to power outages. We also want our membership to understand how these outages are handled when they do take place.

First, every electric cooperative follows a standard process when it comes to restoring power and that is: priority goes to the line that restores power to the most members the fastest.

When it comes to restoration, all repairs start with the main line. Once the main line is fixed, a large number of the members experiencing outages will be restored. All other repairs are pointless until this line is restored because it feeds the other lines.

With the main line fixed, the remaining damage can be isolated. With the line damage isolated, crews can then start to prioritize repairs and this will allow for members to get power faster.

The next focus for the crews will be tap lines. Some tap lines will help restore multiple homes or farms. Just like illustrated in the photo to the right, your neighbor's house could have power while your service line could be damaged. These individual repairs come after all of the distribution lines and tap lines are restored.

You may see crews out working and driving by



your house multiple times and never getting any power. They have a process to getting as many members back up and running as fast as they can.

We hope when that day comes, you remember our process and that we don't want any of our members to be without power.

If you experience an outage please call us at 417-451-1515. For more information on the restoration process visit [newmac.com](http://newmac.com) and click on the Outages menu.

## New-Mac around town!

New-Mac Electric was pleased to be a part of Neo-sho's Sho-Me Expo, March 21 (far right, pictured Ashlea Norman) and the Crowder College Job Fair March 26 (pictured Gabe Ellison). Thank you to everyone that came by our booths to see us!



### Management Team:

**CEO/General Manager** - Stan Irsik

**System Engineer** - Jeff Crites

**Executive Assistant** - Linda Crosby

**Manager of Billing Services** - Josh King

**Manager of Marketing** - Mark K. Rakes

**Operations Manager** - Jeremiah Taylor

**Controller** - Marti Wiley

### Main Office:

P.O. Box 310 — 12105 East  
Highway 86  
Neosho, Missouri 64850

### District Office:

9 Mustang Lane  
Anderson, Missouri 64831

**Phone:** 417/451-1515

800/322-3849

**Fax:** 417/451-9042

**Pay-by-Phone:** 855/874-5348

### Office Hours:

Neosho — 8 a.m. to 5 p.m.

Anderson — 8 to 11:30 a.m.,

12:30 to 5 p.m.

### Board of Directors:

**District 1** - Bruce Youngblood

**District 2** - Tim Short

**District 3** - Richard Leavens

**District 4** - Beryl Kennedy

**District 5** - Billy P. White

**District 6** - Paul Sprenkle

**District 7** - Maurice Mailes

**District 8** - Jason Ruddick

**District 9** - Jamey Cope